

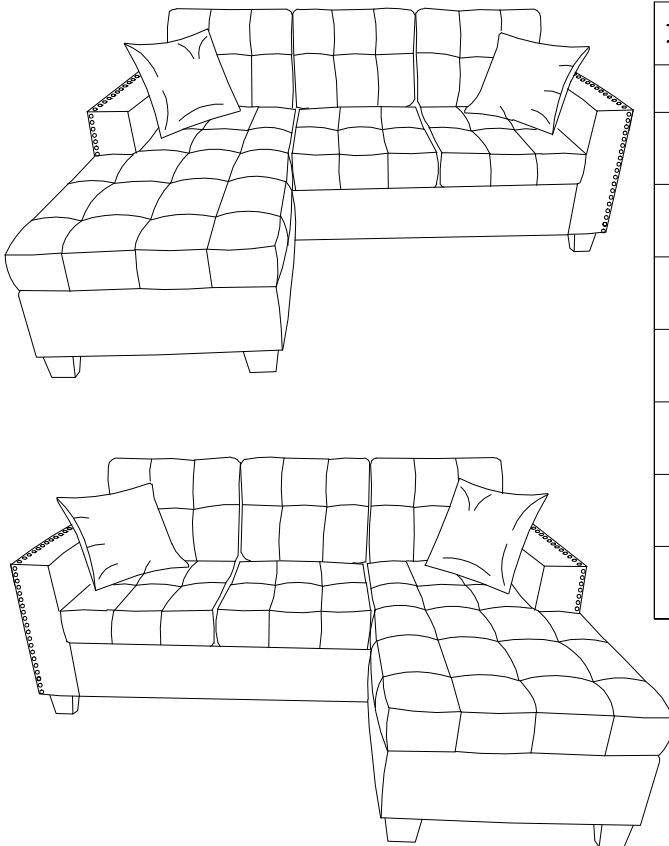
ASSEMBLY INSTRUCTION

GROUP NO.:SH3218
ITEM NO.:SH3218GRY-3SC
SH3218BGE-3SC

Thank you for purchasing this product. Please take time to read and follow the instructions below. Check that you have all parts and hardware before assembly. Parts apparently missing are often found in the packing materials. If you do not have all the parts listed, have your dealer contact us and they be sent to you immediately.

▲ It is recommended to install protective pads under all legs and supports to avoid damage or scratches when placing furniture on a wood floor or other hard surface, and to limit indentation and prevent discoloration if placing on carpet.

NOTE:Do not use power tools for assembly. Power tools increase the risk of over tightening which lead to splitting or cracking the wood.



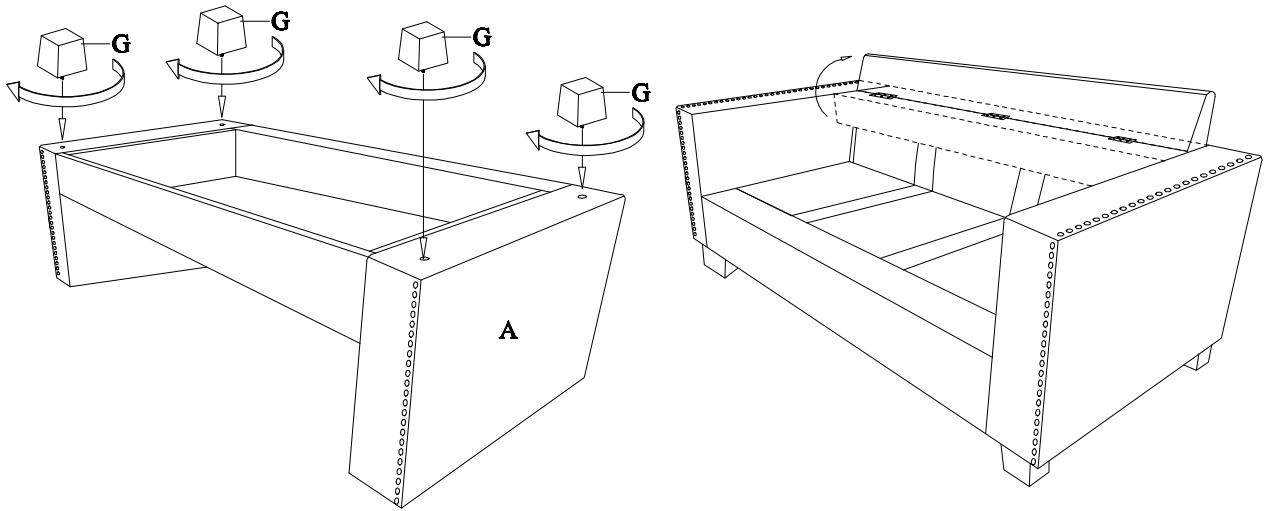
PARTS LIST:

No.	Description	Sketch	Quantity
A	Frame		1 PC
B	Base		1 PC
C	Cushion		2 PCS
D	L-Cushion		1 PC
E	Pillow		3 PCS
F	Feather Pillow		2 PCS
G	Bunfoot		8 PCS

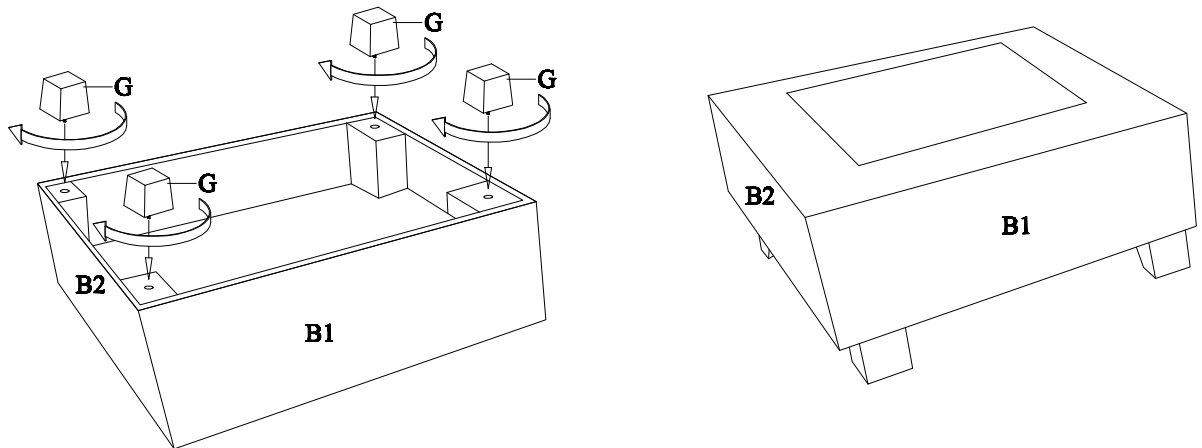
ASSEMBLY INSTRUCTION

GROUP NO.:SH3218
ITEM NO.:SH3218GRY-3SC
SH3218BGE-3SC

STEP 1 FASTEN THE BUNFOOTS (G) TO THE BOTTOM OF FRAME (A)



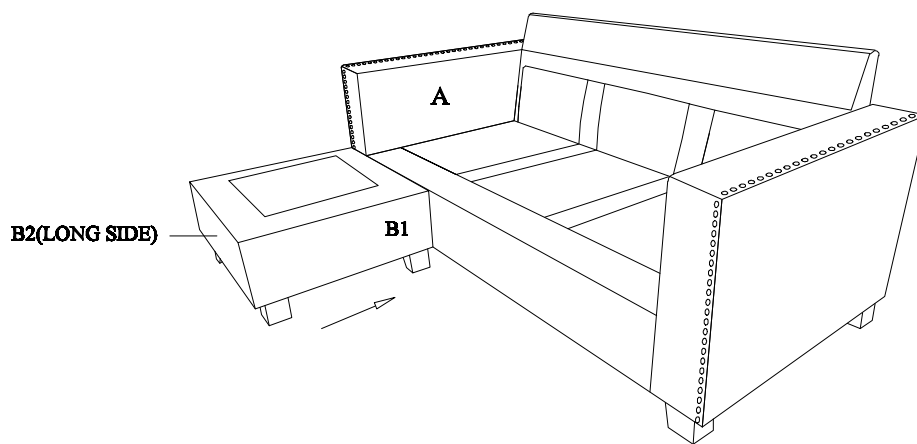
STEP 2 FASTEN THE BUNFOOTS (G) TO THE BOTTOM OF BASE (B)



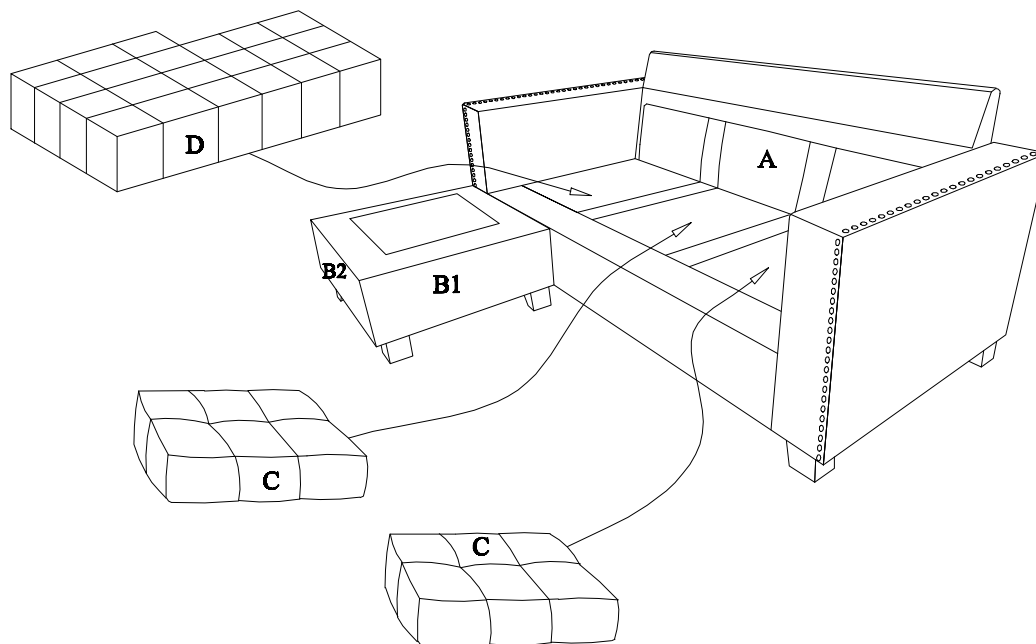
ASSEMBLY INSTRUCTION

GROUP NO.:SH3218
ITEM NO.:SH3218GRY-3SC
SH3218BGE-3SC

STEP 3
BASE (B2-LONG SIDE) NEAR THE BOTTOM OF FRAME (A)



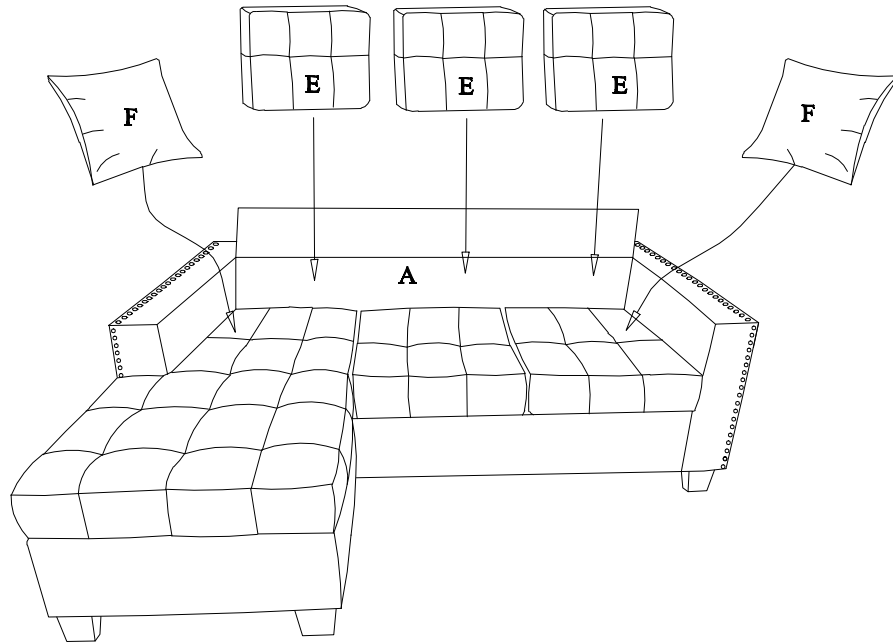
STEP 4
CUSHION(C) AND L-CUSHION(D) NEAR THE BOTTOM OF FRAME (A)BASE (B)



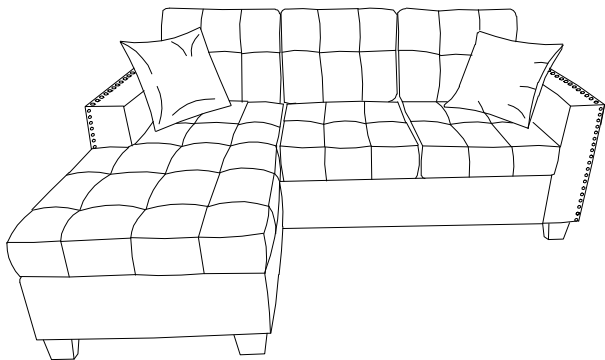
ASSEMBLY INSTRUCTION

GROUP NO.:SH3218
ITEM NO.:SH3218GRY-3SC
SH3218BGE-3SC

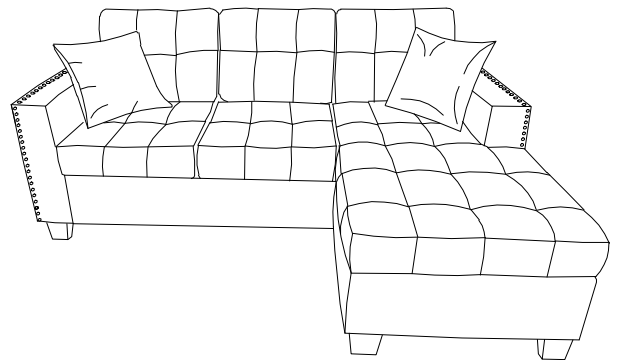
STEP 5
PILLOW (E) AND FEATHER PILLOW (F) NEAR THE BOTTOM OF FRAME (A)



STEP 6
ASSEMBLY COMPLETED



ASSEMBLY MODE 1



ASSEMBLY MODE 2